

DRILL SPREADERS FOR WIRE
 DRILL BOOM FOR SPREADERS
 GLUE SPREADERS INTO PLACE.
 AFTER GLUE HAS SET PAINT
 WOODEN PARTS TO SEAL AGAINST WEATHER
 WHEN IT'S DRY STRING WITH THE WIRE.

NOTE OFFSET BETWEEN HORIZONTAL
 AND VERTICAL SPREADERS
 MEASUREMENTS ALONG BOOM ARE CENTER
 BETWEEN HORIZONTAL AND VERTICAL SPREADERS

- MATERIALS:
- 8 3/8" HARDWOOD DOWELS
 - 2 1 1/2" X 1" PIECES PLEXIGLASS
 - 4 SMALL STAINLESS BOLTS AND NUTS
 - 1 WOODEN BOOM 1 1/4" SQUARE BY 46" LONG
 - APPROXIMATELY 32 FEET OF #14 SOLID CORE INSULATED COPPER WIRE

STANDARD #14
 INSULATED COPPER
 HOUSE WIRE
 STRIP INSULATION EVERY WHERE
 EXCEPT WHERE WIRE PASSES
 THROUGH SPREADERS

JOIN WIRE BY TWISTING
 AND SOLDERING
 EXCEPT ON DRIVEN ELEMENT WHICH USES BOLTS.

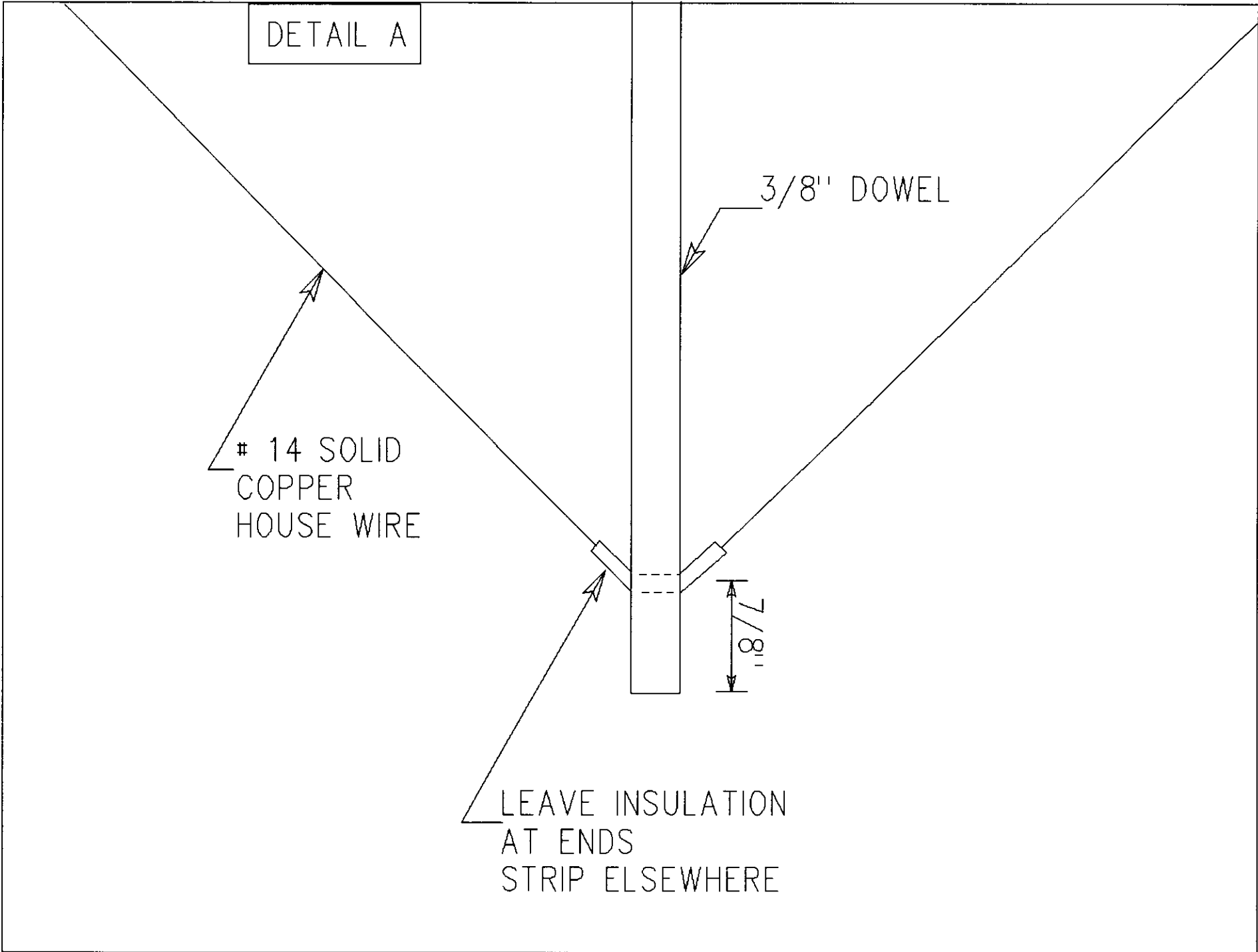
DETAIL A

14 SOLID
COPPER
HOUSE WIRE

3/8" DOWEL

7/8"

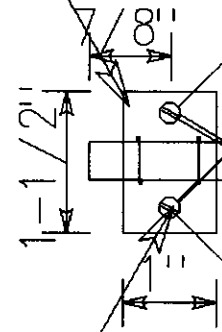
LEAVE INSULATION
AT ENDS
STRIP ELSEWHERE



DETAIL B

PLEXIGLASS WIRED
TO SPREADER

COAXIAL CABLE 50 OHM
TAPED TO SPREADER



STAINLESS BOLTS TO ATTACH
FEED LINE

DETAIL C

VARY LENGTH OF THIS
ARCED WIRE TO
ADJUST SWR

PLEXIGLASS AND BOLTS
SAME AS OTHER SIDE

