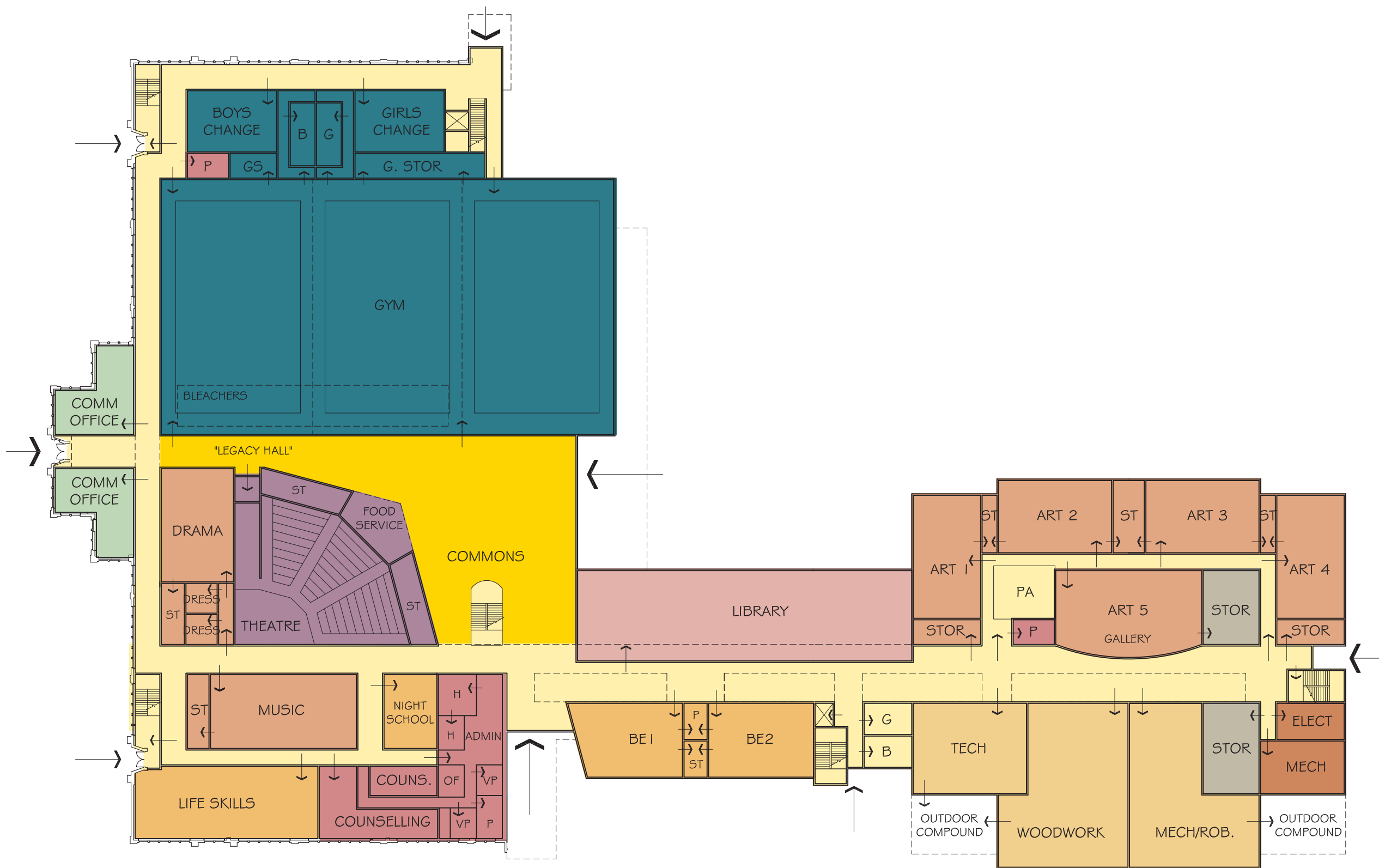


for 1500 Students & NLC area

	Existing Facilities		New Facility			Neighbourhood Learning Centres (NLC) Allocation	Area	Adjusted Area
			Modules	Area	Cum.			
Academic/Vocational Spaces								
Business Education	450		4	120	480			
Fine Arts								
Music			1	180	180			
Drama			1	250	250			
Art	1585		5	140	700	Increase to create separate 325 seat theatre	300	550
Home Economics								
Comb. Food/Clothing			1	160	160			
Foods	632		2	120	240			
Industrial Education								
Woodwork			1	275	275			
Mechanics/Robotics			1	230	230			
Technology (clean)	1499		1	140	140			
Science	924		9	140	1260			
General Instruction	2219		33	80	2640			
Other								
Project/Prep	0				445			
		7309	59					7000
Special Education								
Classrooms			5	80	400			
Specialized Sp. Ed. Areas					130			
		233						530
Media/Technology Centre (Library etc.)								
		475						460
Multipurpose (Cafeteria etc.)								
		872				Increase for joint community use	180	500
Physical Education								
Gymnasium Activity (Gym, Weight Rm etc)	1416							
Gymnasium					1250			
Weight Room					100	Increase for joint community use	467	1717
Gymnasium Ancillary (Change Rms, Gym Stor)	495				280	Increase for joint community use	100	200
		1911			280	Increase for joint community use	140	400
								1630
Administration/Health/Counselling								
Administration/Health	423				280			
Counselling	168				85			
		591						365
General Storage								
		334						140
Mechanical								
		732						315
Design Space (Circulation, walls, washrooms) 28%		5334				Circulation allocation (28%)	450	3375
<b>Subtotal</b>		<b>17,791</b>						<b>13,685</b>
Other								
Auditorium	595					Community Subdividable Multi-use	250	
School Store	79					Community Offices	120	
Night School Offices	45					Night School Offices	46	
		719			15%			2053
<b>Total Project Area</b>		<b>18,510</b>						<b>2053</b>



# Kitsilano Secondary School RENEWAL PLAN

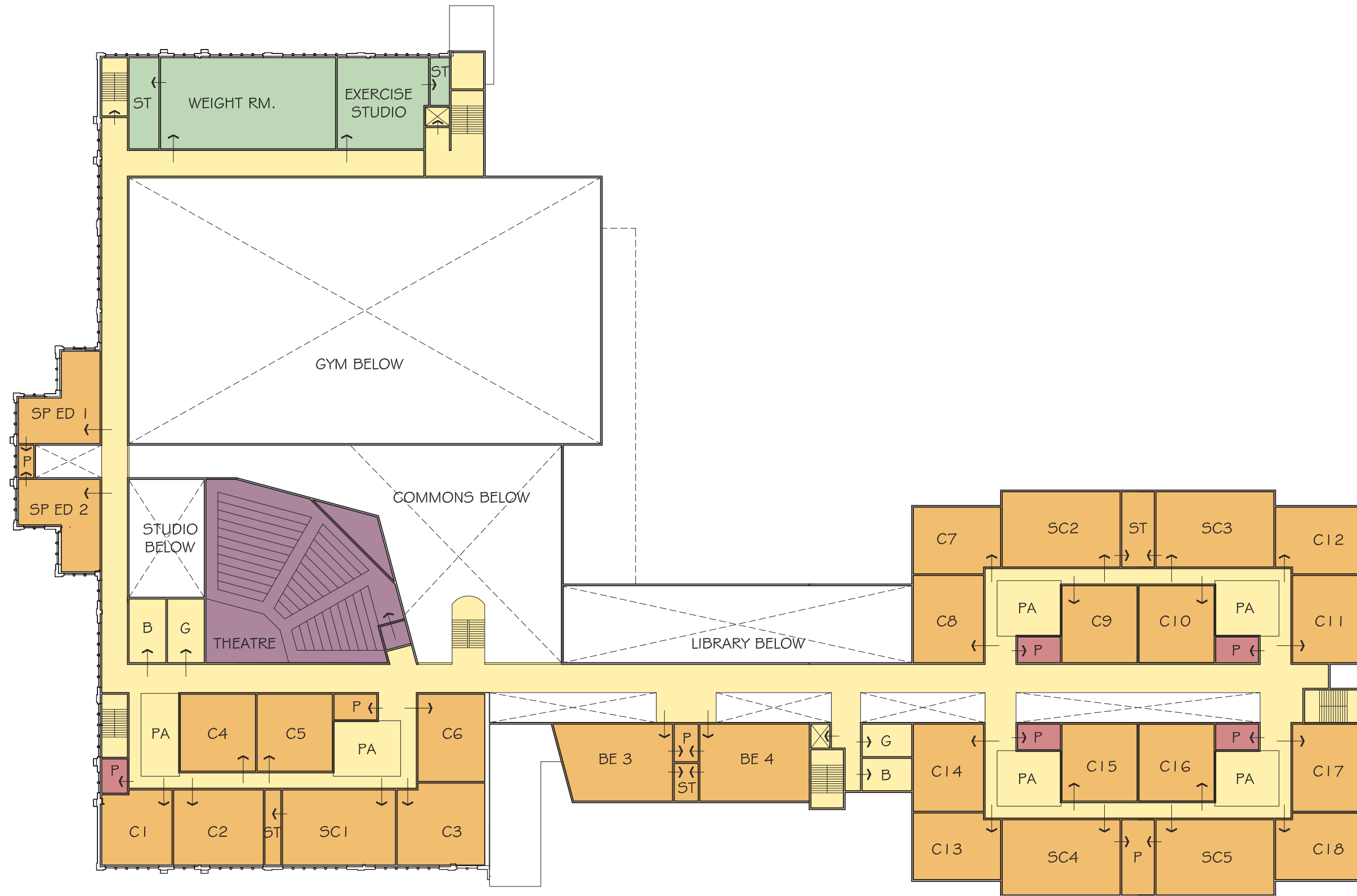


# Kitsilano Secondary School RENEWAL PLAN



## SCHEME D.2 - GROUND FLOOR PLAN

12 JANUARY, 2010

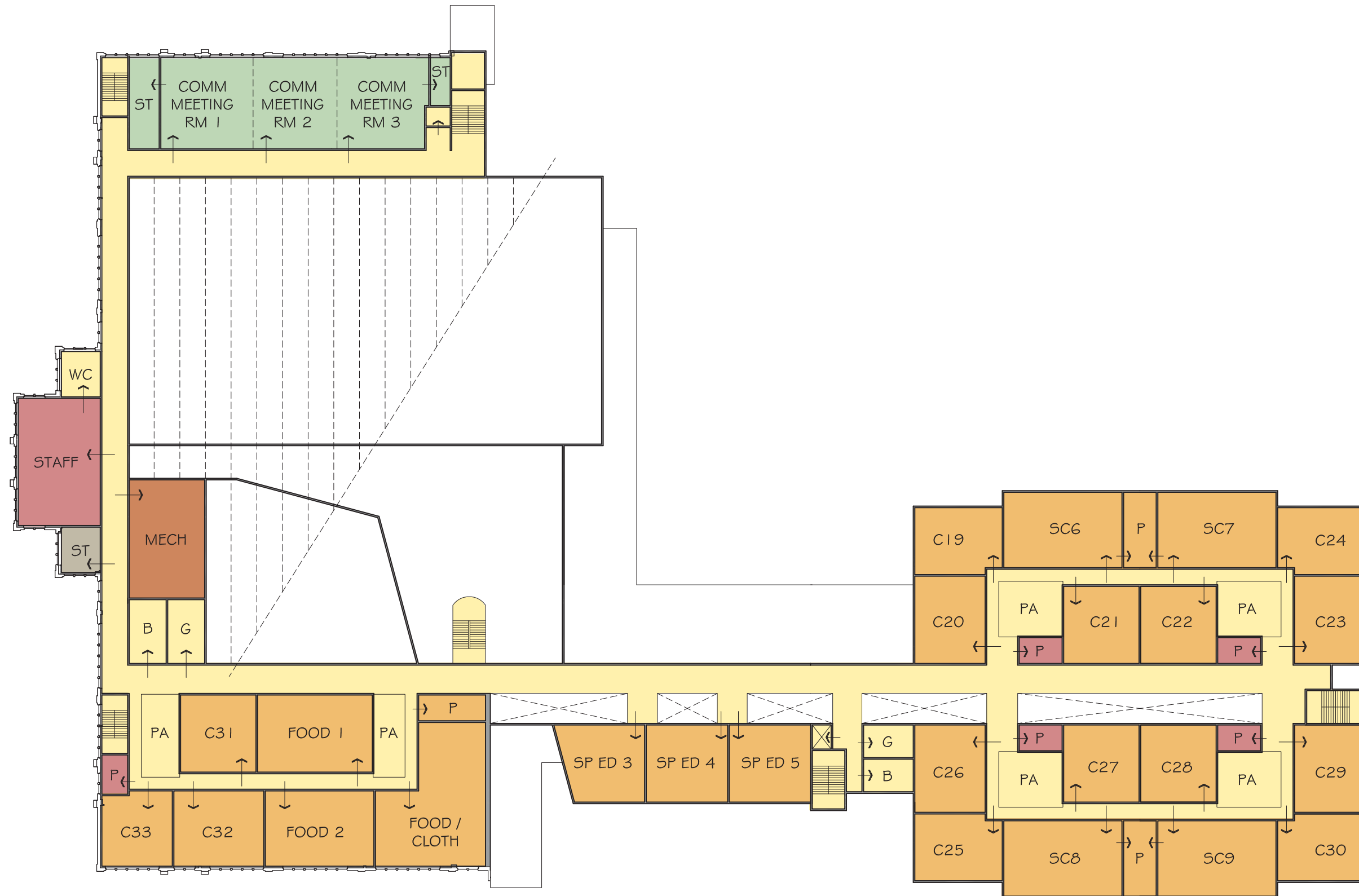


Kitsilano Secondary School  
RENEWAL PLAN



**SCHEME D.2 - SECOND FLOOR PLAN**

12 JANUARY, 2010

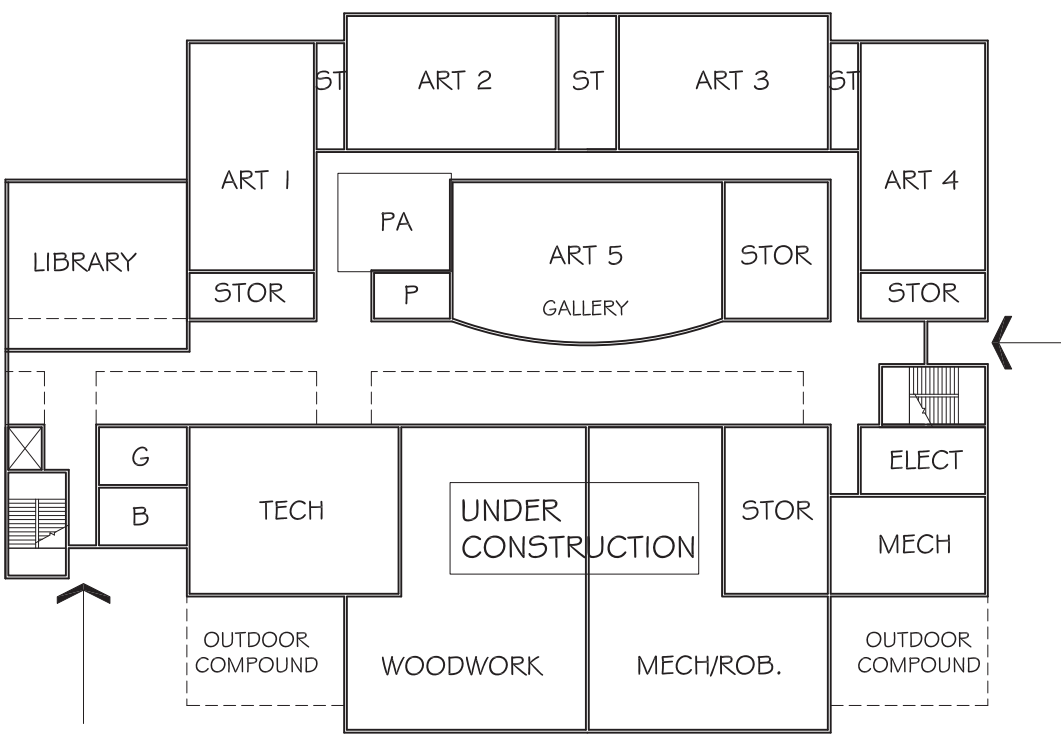
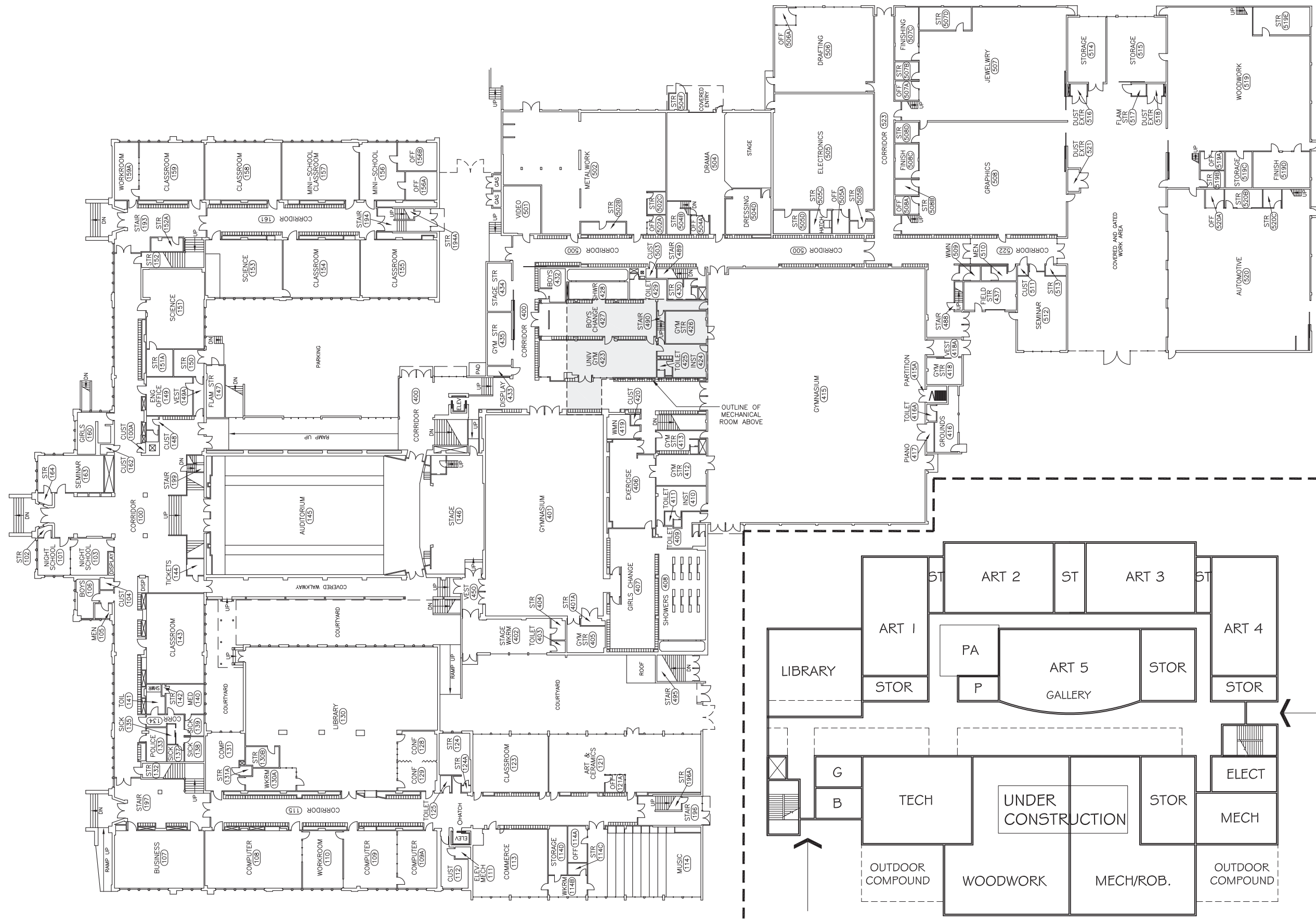


Kitsilano Secondary School  
RENEWAL PLAN



**SCHEME D.2 - THIRD FLOOR PLAN**

12 JANUARY, 2010

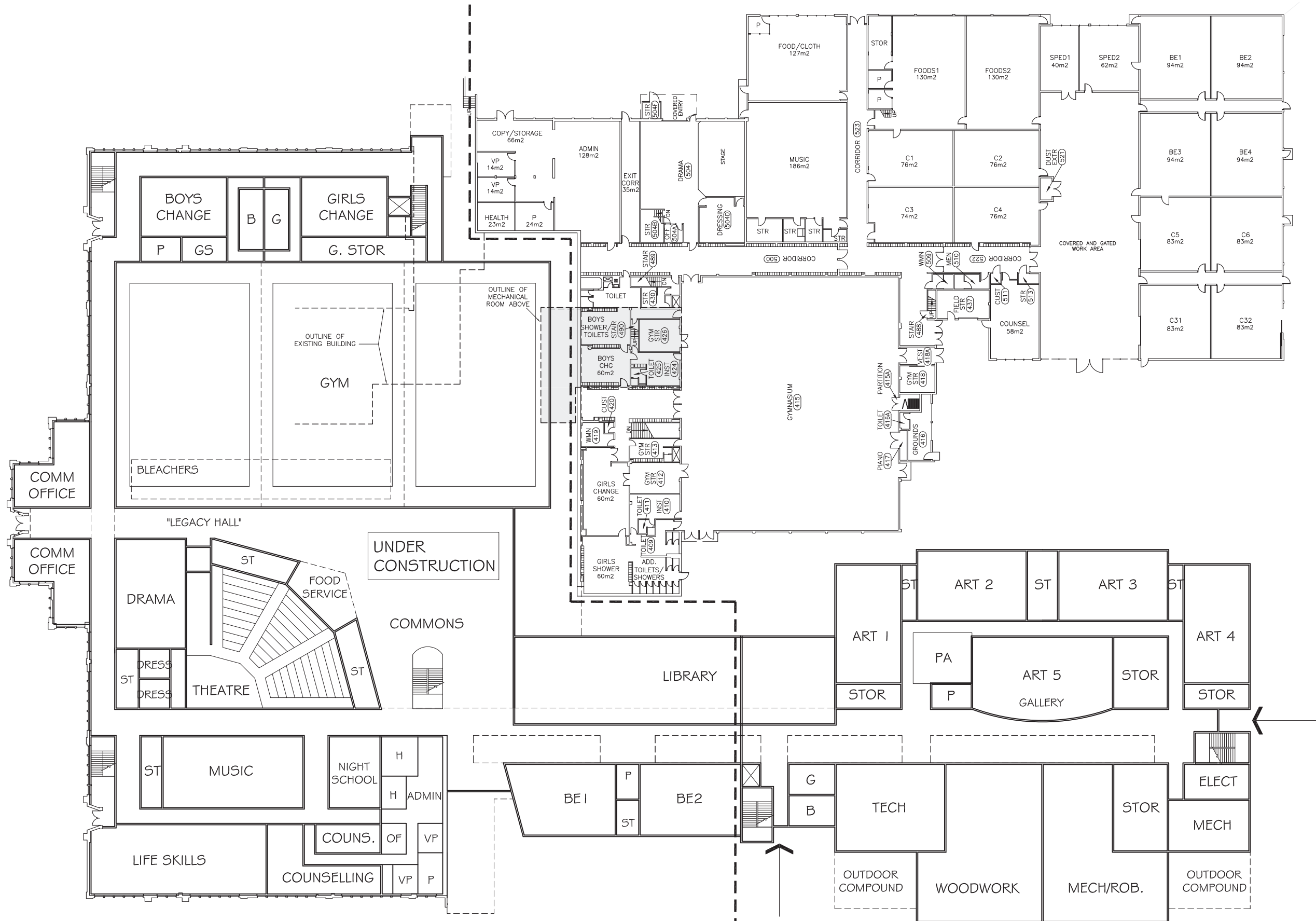


**SCHEME D.2 - PHASE 1 DIAGRAM**

12 JANUARY, 2010



# Kitsilano Secondary School RENEWAL PLAN



**PHASING NOTES:**

**SPACES/AREAS—NOT ACCOMMODATED IN PHASE 2**

- \* 1 GENERAL CLASSROOM (80m<sup>2</sup>) – 32 CLASSROOMS ACCOMMODATED
- \* 3 SPECIAL ED. CLASSROOMS (80m<sup>2</sup> EACH)
- \* 1 SPECIALIZED SPECIAL ED CLASSROOM (130m<sup>2</sup>)
- \* 1 SCIENCE CLASSROOM (140m<sup>2</sup>)
- \* CAFETERIA
- \* EXERCISE ROOM #406 DISCONTINUED IN PHASE 2
- \* UNIV. GYM DISCONTINUED IN PHASE 2—OPT1.

**UNDERSIZED SPACES/AREAS:**

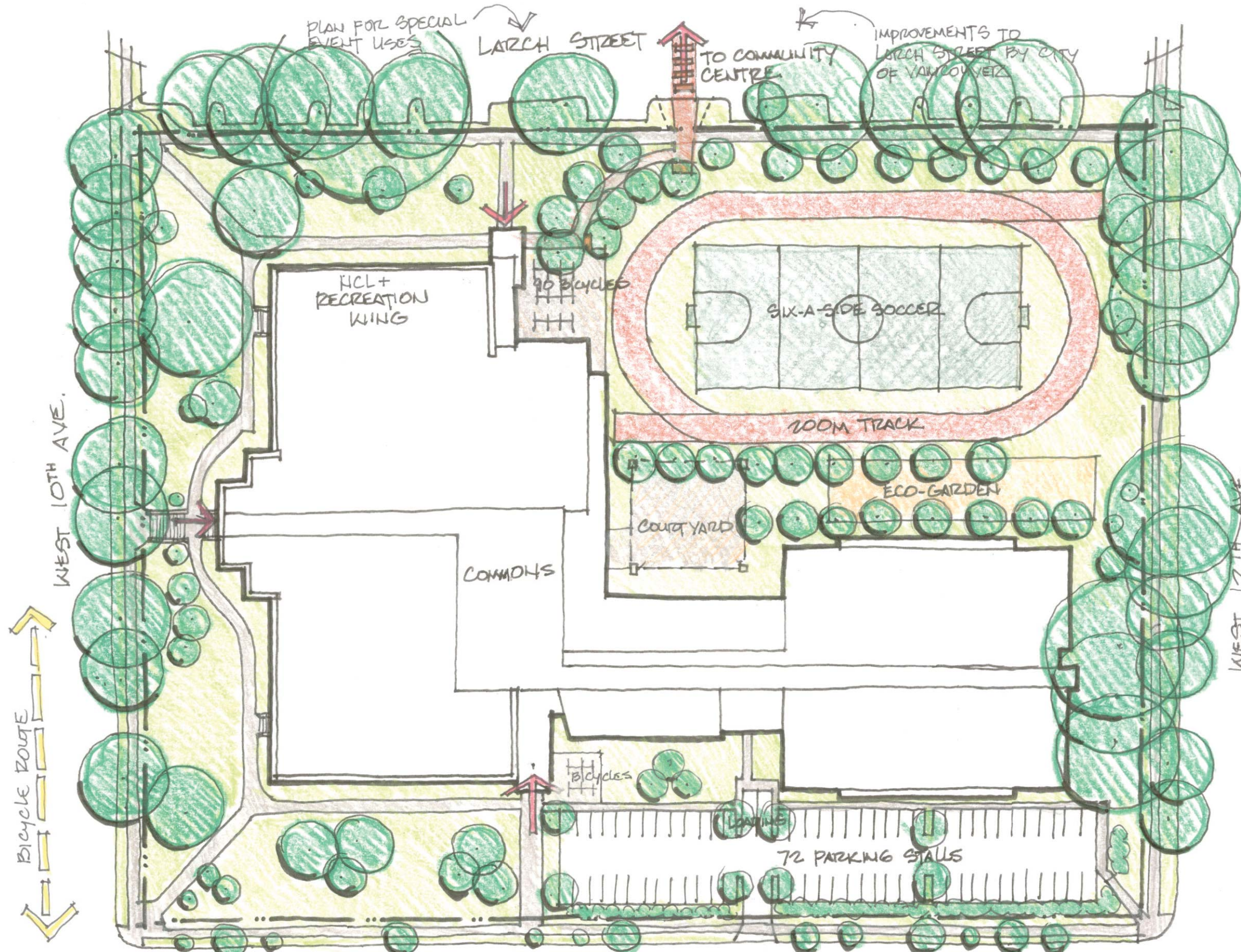
- \* 2 SPECIAL ED. CLASSROOMS UNDERSIZED (BY 18m<sup>2</sup>–40m<sup>2</sup>)
- \* COUNSELLING UNDERSIZED BY 27m<sup>2</sup>
- \* 4 BUSINESS ED. CLASSROOMS – UNDERSIZED BY 26m<sup>2</sup> EACH
- \* LIBRARY UNDERSIZED BY 265–310m<sup>2</sup>



# Kitsilano Secondary School RENEWAL PLAN

## SCHEME D.2 - PHASE 2 DIAGRAM

12 JANUARY, 2010



Kitsilano Secondary School

# RENEWAL PLAN



## SCHEME D.2 - SITE PLAN

12 JANUARY, 2010